

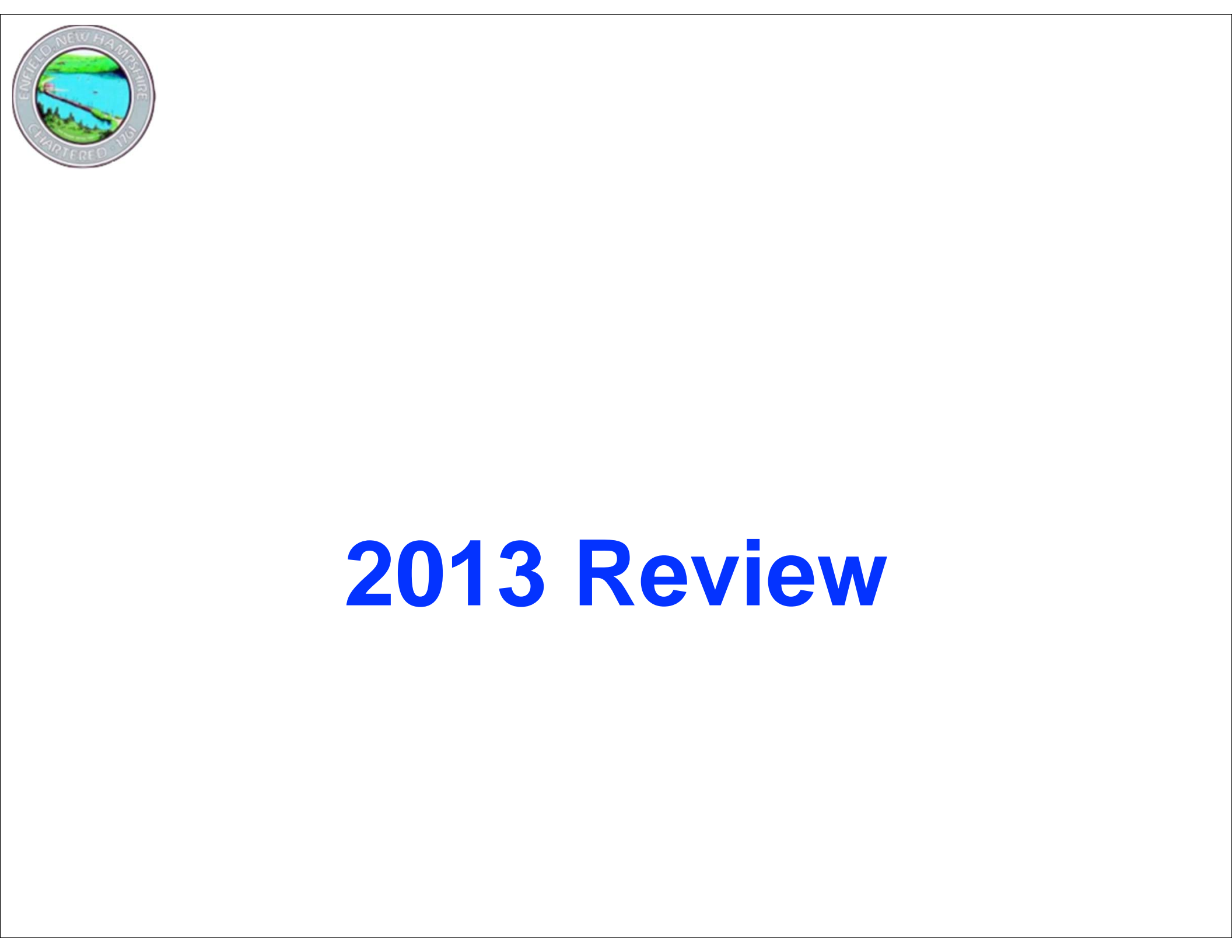


# **CIP**

**(Year Three)**

# **Capital Improvement Program**

**3-15-14**



# 2013 Review



# CIP Balance Sheet

as of December 31, 2013

Reserves (CIP-RF)	\$326,047
Current Liabilities: DPW Police	(\$972,700) (\$115,100)
Total 2013 Liabilities	(\$1,087,800)
Balance	(\$761,753)



## FY 2013 CIP Capital Items Approved

Jones Hill	Article 4	\$265,504
Salt Shed	Article 6	\$150,000
<u>Town Facilities:</u>		
DPW Oil Burner	Article 10	\$8,500
Community HVAC		\$15,000
Whitney Painting & Repair		\$40,000
Storage Shed Station	Article 8	\$15,000
Cruiser	Article 11	\$30,000
Thermal Camera	Article 14	\$14,000
FY 2013 TOTAL CAPITAL APPROVED		\$538,004









Whitney Hall





WHITNEY HALL  
MUNICIPAL BUILDING  
TOWN OFFICES - BOWEN LEVEL - REAR  
EMFIELD PUBLIC LIBRARY  
LIBRARY HOURS  
Mon. - Fri. 9:00am - 5:00pm  
Sat. 10:00am - 12:00pm

23

shaker bridge

theatre





# 2013 Update

- New Salt Shed will Reduce Operating Cost \$13,990/yr
- Delayed purchase of Two Trucks Savings \$34,277
- Whitney Repairs budgeted \$40,000, spent \$20,000



# **2014 Warrant Articles**



# **CIP**

## **FY 2014 Capital Items Requested**

<b><u>Item</u></b>	<b><u>Financing</u></b>	<b><u>Article</u></b>	<b><u>Amount</u></b>
<b>Dump Truck 6 Wheel</b>	<b>CIP-RF Lease</b>	<b>9</b>	<b>\$175,000</b>
<b>2 One-Ton Trucks</b>	<b>CIP-RF Lease</b>	<b>9</b>	<b>\$90,000</b>
<b>Cruiser</b>	<b>CIP-RF Lease</b>	<b>11</b>	<b>\$30,000</b>
<b>Boat launch &amp; Pavement Engineering Study</b>	<b>CIP-RF</b>	<b>13</b>	<b>\$10,000</b>
<b>FY 2014 Budget</b>			<b>\$305,000</b>





# Three Trucks

## Article 9

- Two (2) One-ton Ford F550  
cost \$45,000 each
- One (1) International 6 wheel  
cost fully equipped \$175,000
- 10 year leases
- Cost covered by CIP



# Article 9

- Why are we replacing a 2009 Sterling Truck with a new 6 wheel International?
  1. Sterling is no longer in business making parts
  2. The last three years maintenance costs were \$25, 651
  3. The truck is on it's third rear end, and needs a third clutch
  4. Truck's train components are not heavy enough for DPW work.
  5. Excessive downtime for repairs adds to overtime costs and extra wear on the fleet. On 2-20-13 truck went out of service for 3 weeks.



# Cruiser

## Article 11

- Four Year Lease, Ford Interceptor
- Cost \$30K includes equipment
- Same cruiser purchased last 3 years
- Funded by CIP-RF





# **Mascoma Lake Boat Launch & Paving Article 13**

- 2013 Completed Boat Launch Engineering &  
- Permitting
- 2014 Engineer and apply for parking lot permit  
- \$10K  
Get bids on Boat Launch & Paving
- 2015 Project will start  
-  
10 year loan @ \$19,000/yr starting Spring  
2015



# Boat Launch Issues

## Article 13

- Drop off of the launch requires driving the vehicle and trailer totally into the lake
- Difficult to pull trailer and boat out without four-wheel drive
- Current parking issues can be addressed with paving.
- Section of launch eroded away, causing abrupt drop
- Environmental issues caused by pollutants from undercarriage being deposited into the water



# 2014 CIP Funding

## Article 12

- Add 5 cents \$27,000
- Total CIP-RF Funding \$291,783





# CIP-RF Withdrawals

- 2014 \$117,300



# **CIP Impact on 2014 Tax Rate**

## **Adds 5 Cents**

### House Assessment

### Tax Increase

\$150,000

\$7.50

\$250,000

\$12.50

\$400,000

\$20.00



# 2013-14 Capital Improvement Program Committee

Lee Carrier  
Fred Cummings  
Bob Cusick  
Gary Gaudette  
Dan Kiley  
Suzanne LaLiberte  
Doug Pettibone  
Steve Schneider

Thank you for your support of CIP. This important process is critical in maintaining a sound fiscal program.