

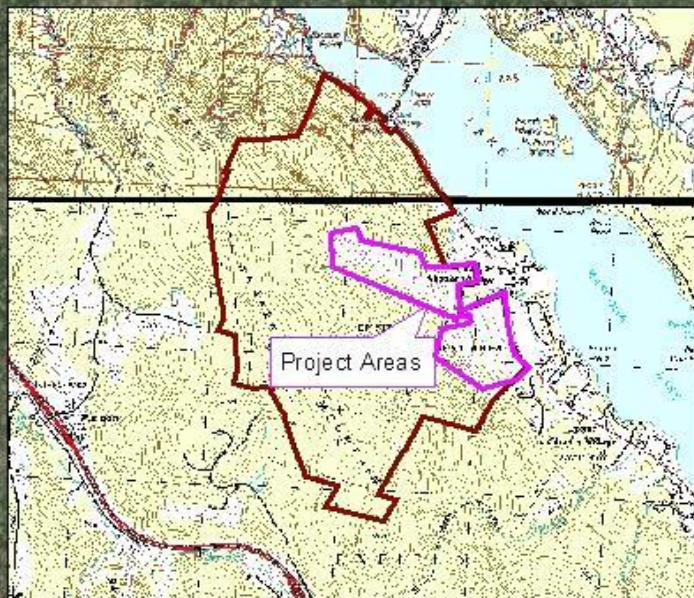
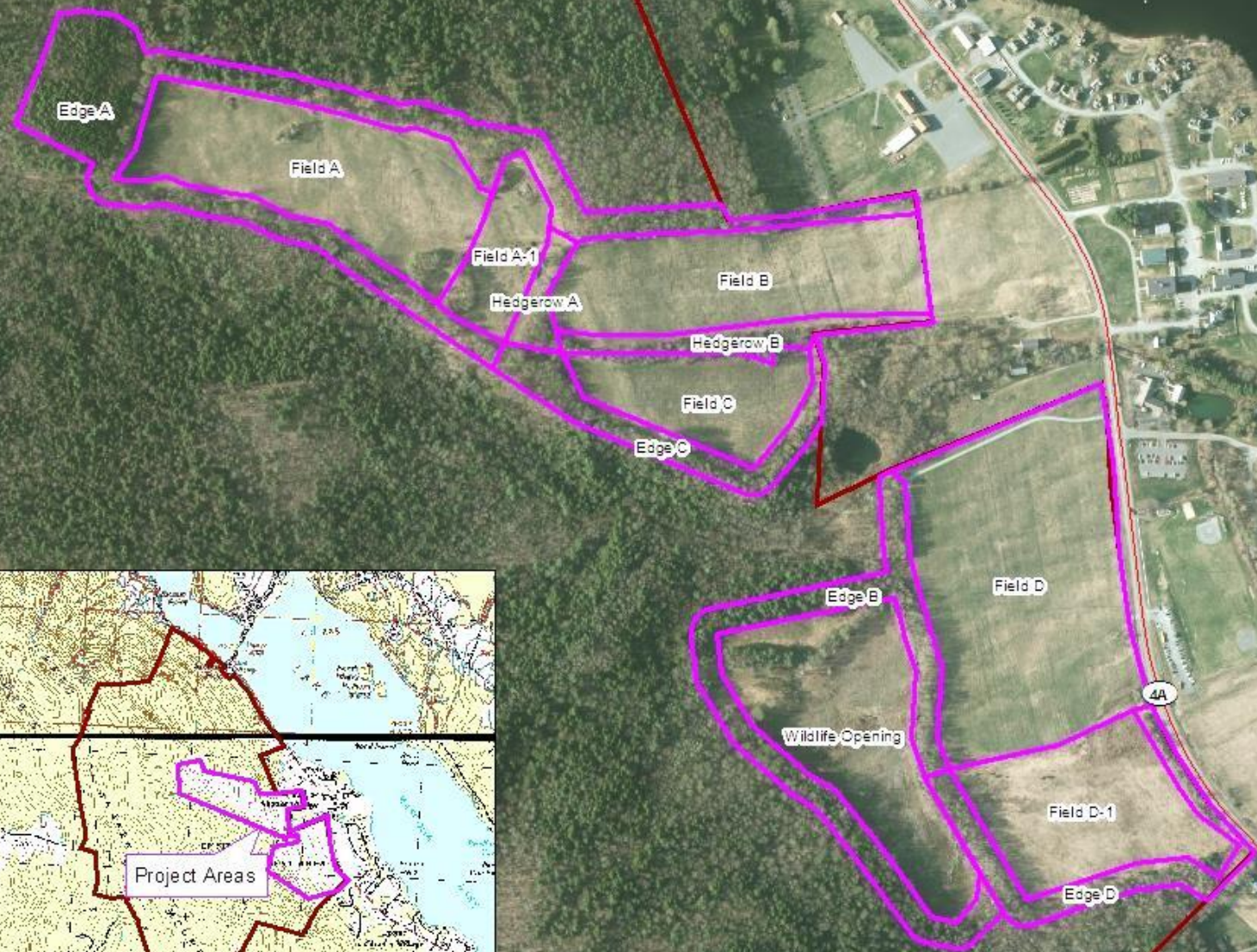
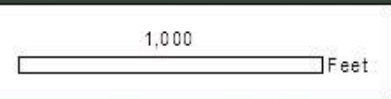


# **Lower Shaker WMA**

Field Habitat Restoration and  
Enhancement



# Lower Shaker WMA Field Habitat Restoration and Enhancement





# Treatment Plan: Field A, B, D

- **Objective:**  
Restore Grassland
- **Treatment:**
  - Mow frequently
  - Invasives control
  - Soil amendments - ash
  - Seed grass/clover





# Targeted Wildlife



©Dave Hawkins Photography, Nashville, TN





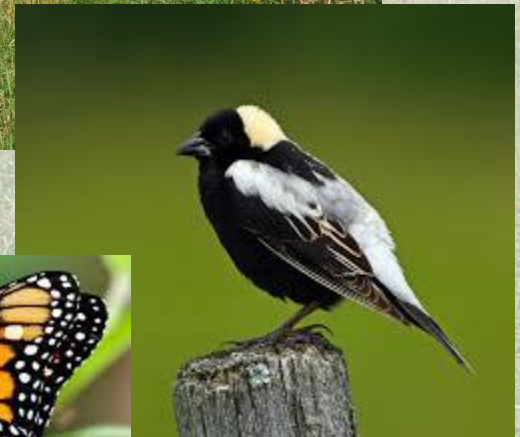
# Treatment Plan: Edges A & C, & Hedgerows

- **Objective:** Meadow
- **Treatment:**
  - Invasives control
  - Rotational mowing





# Targeted Wildlife





# Treatment Plan: Everything Else

- **Objective:**  
Shrubland and Young Forest
- **Treatment:**
  - Invasives control
  - Harvest trees
  - Rotational mowing





# Targeted Wildlife



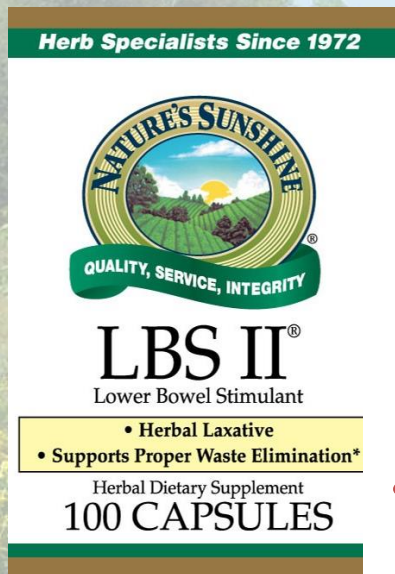


# Invasive Exotic Plant Control





# Why Control?



Stock No. 990-1  
NATURE'S SUNSHINE PRODUCTS, INC.  
Spanish Fork, Utah 84660 1-800-223-8225  
www.naturessunshine.com ©2011

## Supplement Facts

Serving Size 4 Capsules  
Servings Per Container 25

### Amount Per 4 Capsules

Proprietary Blend	1700 mg *
Cascara Sagrada Bark ( <i>Rhamnus purshiana</i> )	
Buckthorn Bark ( <i>Rhamnus frangula</i> )	
Licorice Root ( <i>Glycyrrhiza glabra</i> )	
Capsicum Fruit ( <i>Capsicum annuum</i> )	
Ginger Rhizome ( <i>Zingiber officinale</i> )	
Oregon Grape Root & Rhizome ( <i>Mahonia aquifolium</i> )	
Turkey Rhubarb Root ( <i>Rheum officinale</i> )	
Couch Grass Rhizome ( <i>Agropyron repens</i> )	
Red Clover Flower ( <i>Trifolium pratense</i> )	

\*Daily Value not established

Other Ingredients: Capsule (kosher gelatin, water).



Some poor food for birds  
(buckthorn - laxative)

Poor food source for mammals



# Why Control?



Reduction in nesting success  
(rose and honeysuckle)

Reduce plant diversity

- Nesting sites
- Food availability  
(insects and fruits)



# Why Control?



Deter spread into managed habitats.



# How to Control?

- **Targeted Herbicide Application**
- **Herbicides:**
  - 2.0% glyphosate
  - 1/4% imazapyr
  - < 0.01% metsolfuron methyl
- **In 100 gal mix – Approx 10 acres**
  - 2.5 gals glyphosate
  - 32 oz imazapyr
  - 3 oz metsolfuron methyl





# State Lands Management Team

- Forest Management Bureau
- Division of Parks & Recreation
- Trails Bureau
- Fish & Game Department
- Natural Heritage Bureau
- Div. of Historic Resources
- Wetlands Bureau
- Nongame & Endangered Wildlife Program





# Local Questions

- **Ingestion by Wildlife**
  - Most invasives aren't eaten by mammals
  - Low toxicity + low concentration = little to no impact
- **Slow to degrade**
  - Most = 5-30 days
  - Low end of range for warmer and moister climates
  - Imazapyr longer but low concentration (1/4%)
- **Soil mobility & accumulation**
  - Binds to soil particles (glyphosate)
  - Dense veg – unlikely to reach soil
  - Low concentration
  - Targeted application





# Low Concentration – Low Toxicity

## GLYPHOSATE

<b>EYE –</b>	Slight eye irritant. Undiluted product may cause pain, redness and tearing.
<b>SKIN -</b>	May be slightly irritating to the skin.
<b>INGESTION -</b>	No more than slightly toxic and no significant adverse health effects are expected to develop if a small amount (less than a mouthful) is swallowed.

## SWIMMING POOL TABLETS



### POTENTIAL HEALTH EFFECTS

**EYES: DANGER:** Highly Corrosive. Causes eye damage. Do not get in eyes.

**SKIN: DANGER:** Highly Corrosive. Causes skin damage. Do not get on skin.

**INGESTION:** May be fatal if swallowed.

**INHALATION:** Irritating to nose and throat. Avoid breathing dust or fumes.





# Timing

- **Pink + Fields**
  - 50 acres
  - 2017 & 2019
- **Purple Outline + Fields**
  - 36 acres
  - 2018 & 2020





# Enfield Shaker Museum

- **10 acres**
- **Green Area**
  - 6.5 acres
  - Selective herbicide
  - \$1,465 in 2018
  - \$1,300 in 2020
- **Pink Area**
  - 2.5 acres
  - Wellhead zone
  - Hand pulled by F&G
- **Permitting**
  - F&G

